



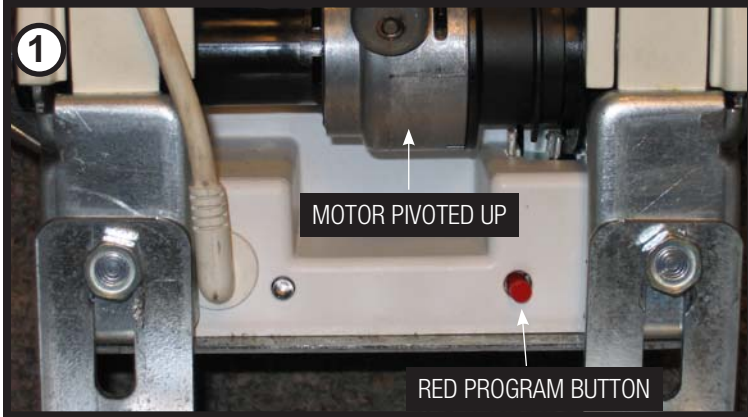
www.wayne-dalton.com

idrive[®] Op 47 Board Replacement

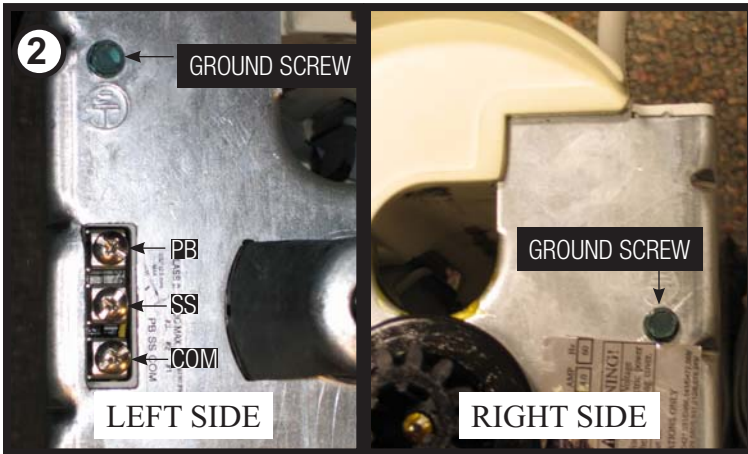
Use these instructions when replacing the circuit board in the Op47 idrive[®] for Torsion opener.

⚠ WARNING

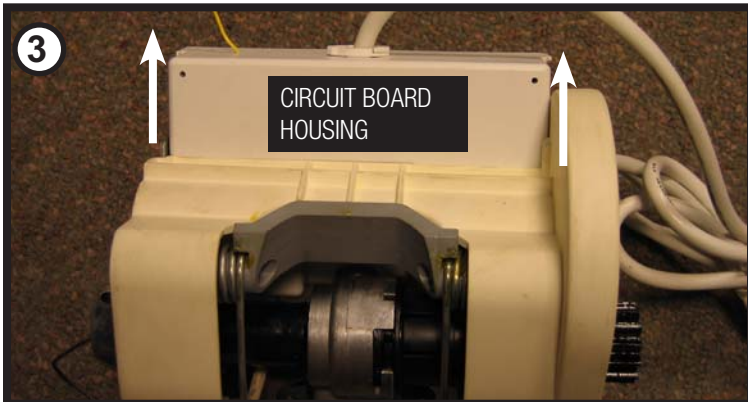
UNPLUG THE POWER CORD AT THE POWER RECEPTACLE OR DISCONNECT POWER AT FUSE/BREAKER BOX BEFORE ANY MAINTENANCE PROCEDURES ARE MADE. FAILURE TO DO SO, MAY RESULT IN SEVERE OR FATAL ELECTRIC SHOCK.



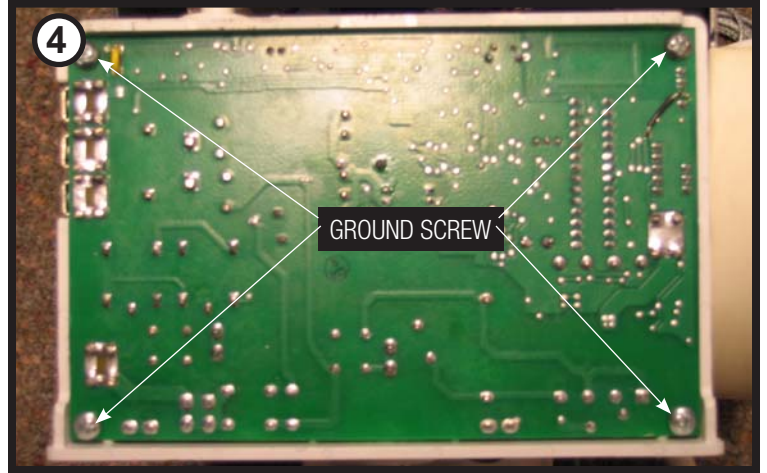
If the motor is not pivoted up, put the disconnect handle in the manually operated position (lower position). Remove the red program button cap on the bottom of the opener.



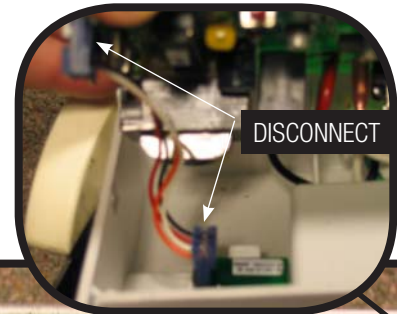
Remove the ground screw and the three terminal screws labeled (PB, SS and COM) from the left hand side and remove the ground screw from the right hand side.



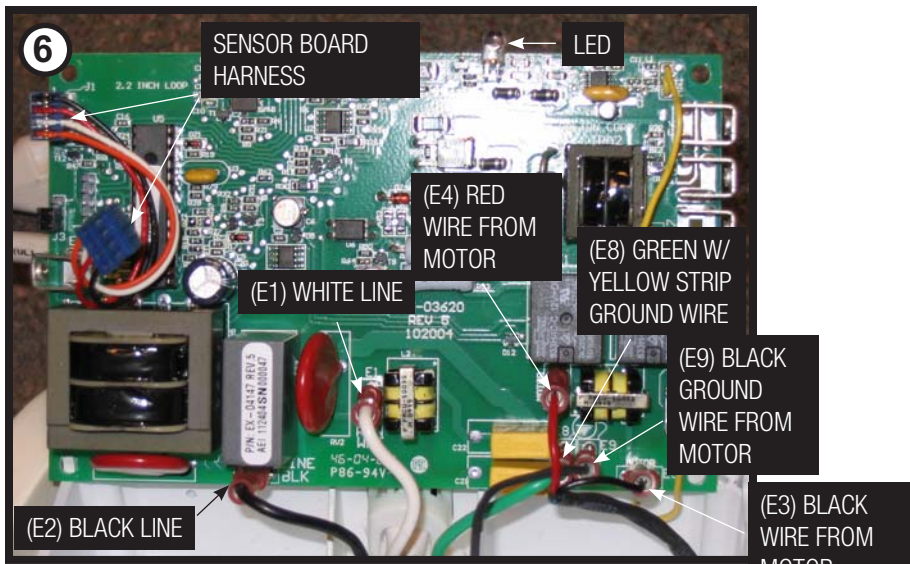
Once the screws have been removed, pull the circuit board housing out and lay the housing on top of the chassis. The motor cable will remain attached to the housing.



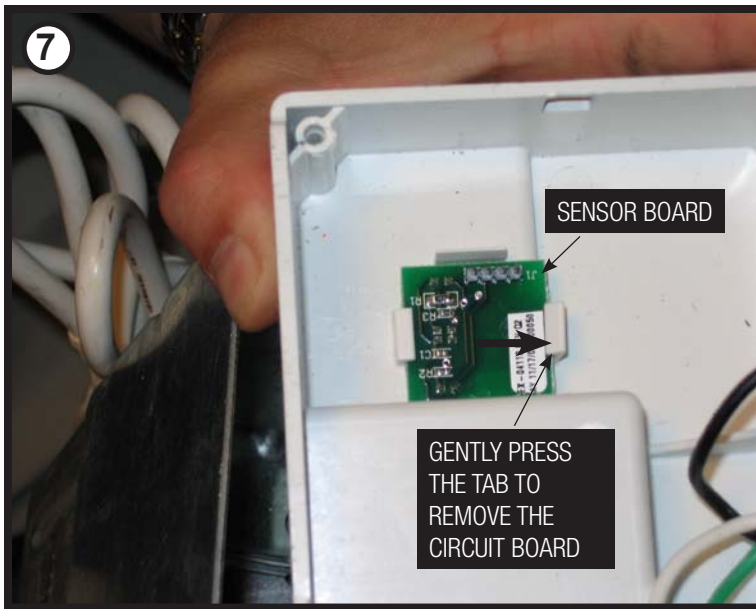
Using a phillips head screwdriver, remove the four screws from the main circuit board.



Gently pry the main circuit board up to access the wiring connections. Unplug the harness between the main circuit board and the small sensor board attached to the housing. Feed the external antenna into the housing as the circuit board is being lifted.



Unplug all seven wires from the main circuit board, making sure to note the location of each wire. Remove the old circuit board.



To remove the sensor board on the circuit board housing, gently press the tab and lift up on the circuit board. NOTE: Orientation of the sensor board in the circuit board housing. Install the new sensor board. Connect the new main circuit board with the wires as shown in Step 6. Re-connect sensor board harness with the correct polarity. Same harness wire must connect between "J1" pin on main circuit board and "J1" pin on sensor board. Place the main circuit board back in the circuit board housing, insert end of circuit board with the LED first to pass LED through the hole in the housing. Lay wiring to avoid mechanical interference and attach with the four phillips head screws. Slide the circuit board housing back in the chassis of the opener. Reinstall the ground screw and the three screws labeled (PB, SS and COM) from the left hand side of the opener and the ground screw on the right hand side of the opener. Reinstall the red program button.

Plug the opener power cord in at the power receptacle or turn on the power at the fuse box. Place the disconnect handle in the motor operated position (upper position). Program wall station and transmitters to new circuit board. Run the install routine to reset door limits. See Op 47 idrive® Owners manual.